

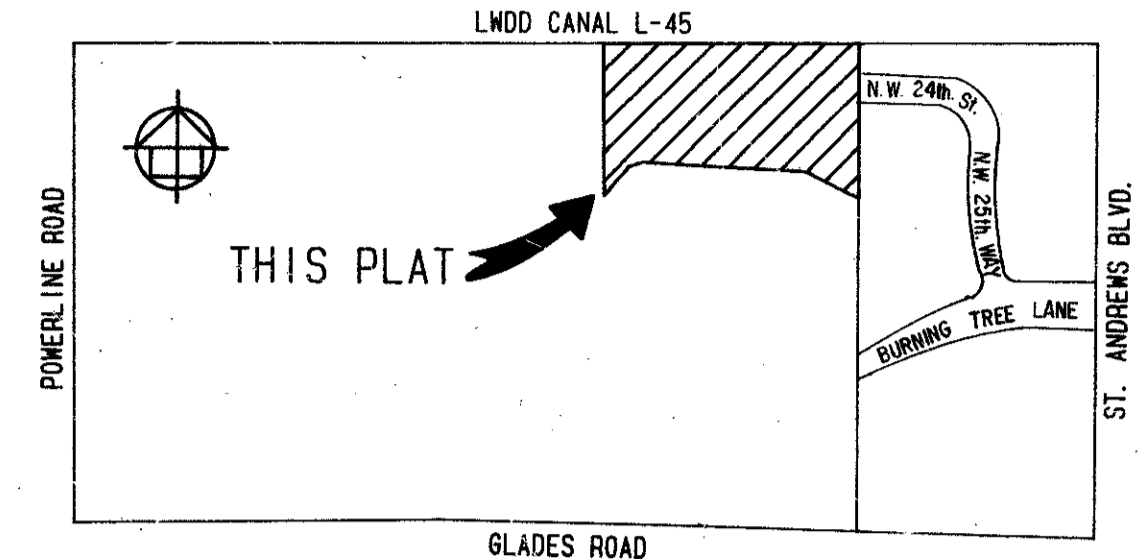
GLADES LANDING PHASE 1 B

SHEET 2 OF 2 SHEETS

201

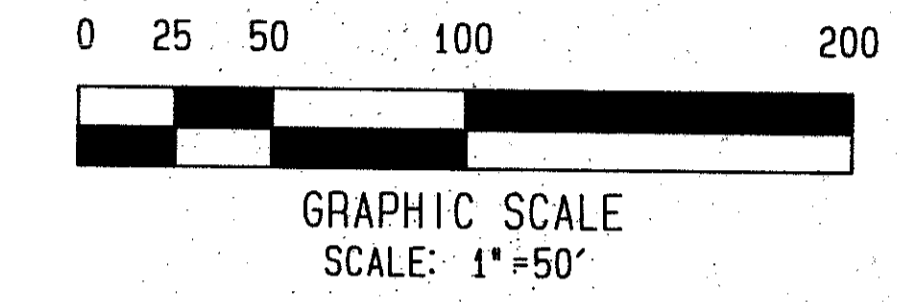
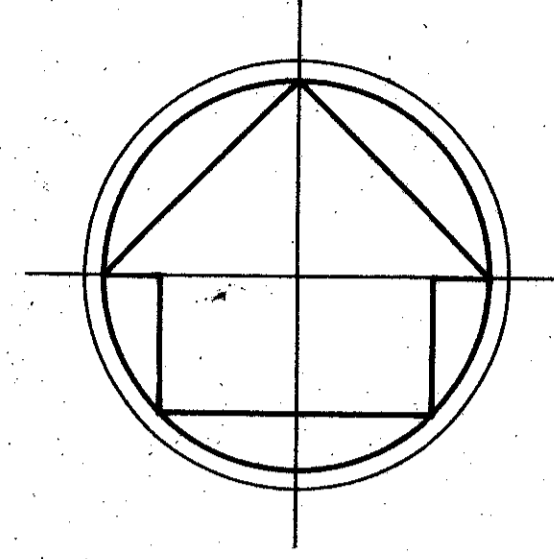
A PART OF GLADES LANDING P.U.D.
 A PORTION OF THE SOUTHEAST ONE QUARTER
 SECTION 15, TOWNSHIP 47 SOUTH, RANGE 42 EAST
 PALM BEACH COUNTY, FLORIDA

PREPARED BY:
 CRAIG A. SMITH & ASSOCIATES
 CONSULTING ENGINEERS & SURVEYORS
 1000 WEST WENAB ROAD
 POMPANO BEACH, FLORIDA 33069
 BY: FREDERICK E. COOPER, TTT, L.S. #2816
 AUGUST, 1988

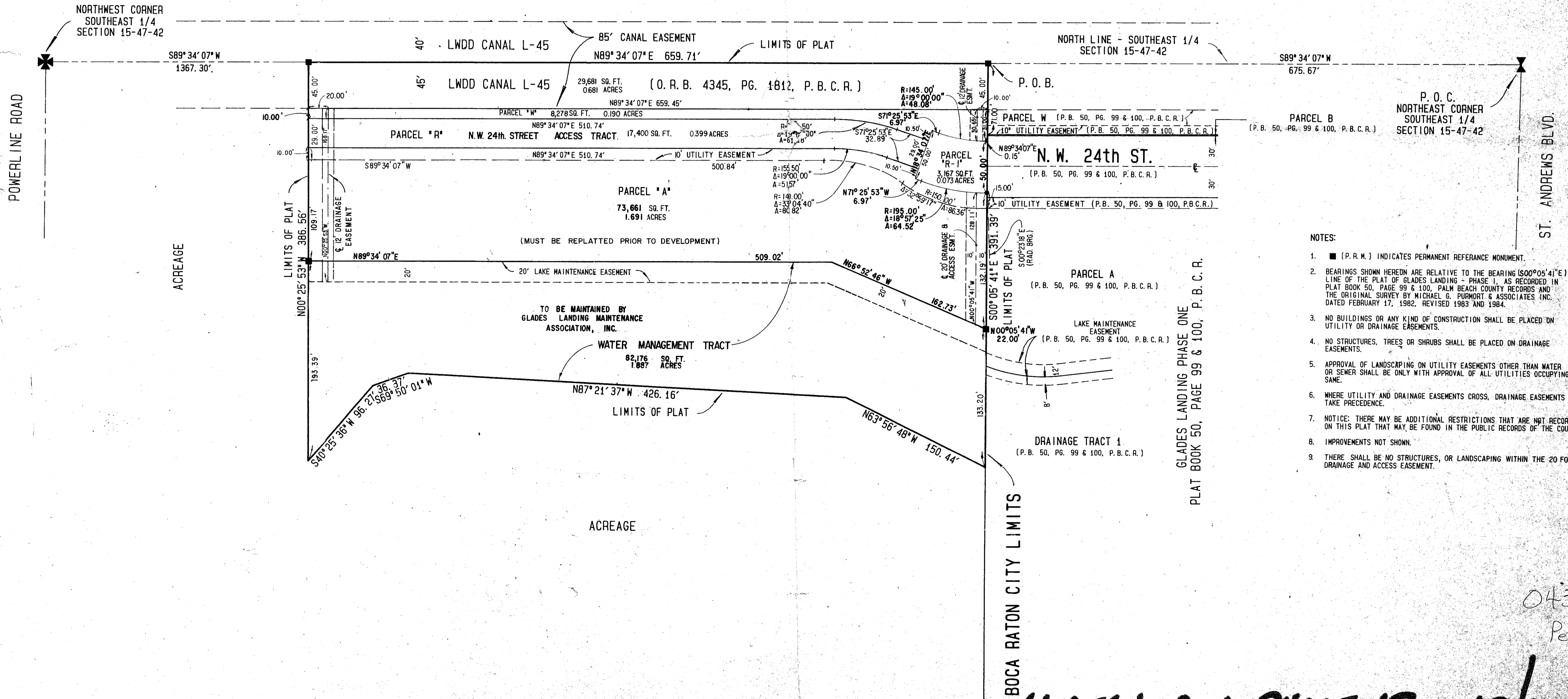


LOCATION MAP
 NORTH 1/2 - SOUTHEAST 1/4
 SECTION 15-47-42
 (NOT TO SCALE)

THE WOODLANDS SECTION ONE
 PLAT BOOK 39, PAGE 127, P.B.C.R.



STATE OF FLORIDA }
 COUNTY OF PALM BEACH }
 THIS PLAT WAS FILED FOR
 RECORD AT THIS
 DAY OF 1988 A.D.
 AND DULY RECORDED IN PLAT BOOK
 No. ON PAGES
 AND
 JOHN B. DUNKLE, CLERK
 BY D.C.



- NOTES:
- (P.R.M.) INDICATES PERMANENT REFERENCE MONUMENT.
 - BEARINGS SHOWN HEREON ARE RELATIVE TO THE BEARING (S00°05'41"E) OF THE WEST LINE OF THE PLAT OF GLADES LANDING - PHASE 1, AS RECORDED IN PLAT BOOK 50, PAGE 99 & 100, PALM BEACH COUNTY RECORDS AND THE ORIGINAL SURVEY BY MICHAEL G. PURMORT & ASSOCIATES INC. DATED FEBRUARY 17, 1982, REVISED 1983 AND 1984.
 - NO BUILDINGS OR ANY KIND OF CONSTRUCTION SHALL BE PLACED ON UTILITY OR DRAINAGE EASEMENTS.
 - NO STRUCTURES, TREES OR SHRUBS SHALL BE PLACED ON DRAINAGE EASEMENTS.
 - APPROVAL OF LANDSCAPING ON UTILITY EASEMENTS OTHER THAN WATER OR SEWER SHALL BE ONLY WITH APPROVAL OF ALL UTILITIES OCCUPYING SAME.
 - WHERE UTILITY AND DRAINAGE EASEMENTS CROSS, DRAINAGE EASEMENTS TAKE PRECEDENCE.
 - NOTICE: THERE MAY BE ADDITIONAL RESTRICTIONS THAT ARE NOT RECORDED ON THIS PLAT THAT MAY BE FOUND IN THE PUBLIC RECORDS OF THE COUNTY.
 - IMPROVEMENTS NOT SHOWN.
 - THERE SHALL BE NO STRUCTURES, OR LANDSCAPING WITHIN THE 20 FOOT DRAINAGE AND ACCESS EASEMENT.

Diado Landing Phase 1B
 PAGE 201
 FLOOD MAP # 2305
 ZONINGS 84-38
 QUAD # 3
 ZIP CODE 33434
 122 608
 P.O. BOX 1000
 PALM BEACH COUNTY, FLORIDA

GLADES LANDING PHASE 1B 63/201

0434-001
 Pt. 84-38